

MUSIC

- 7 **Country Music Night** at Notgrove Village Hall. Open from 7:30 m to 11:30 pm - live music, licensed bar. £5 entrance fee. Tonight's act **Pedro**
- 21 **Country Music Night** at Notgrove Village Hall. Open from 7:30 m to 11:30 pm - live music, licensed bar. £5 entrance fee. Tonight's act **Jonny and Lynette**

DIARY

- 1 **Introduction to Cheesemaking** with Simon Weaver. 9.30-3.30pm. Guided walk around Greystones & lunch included. www.simonweaverorganic.co.uk/courses or email bookings@turnstonefarming.co.uk Greystones Bourton on the Water GL54 2EN.
- 1112 **Our Country's Good at Cotswold School.** Tickets via www.cotswold.gloucs.sch.org.uk/events Adults £6, Children £3 Family Ticket £13.
- 11 **Secrets and Scandals of the Queen's Private Jewels** A Talk by Douglas Chirside at 7.30pm in The Tiddy Hall, Ascot under Wychwood. Tickets @10 to include a glass of wine. Tickets from Sue Boyer 01993 830142
- 13 **The Cotswold Arts Society** MacDonald Gill: Architect, Artist and Mapmaker with Caroline Walker. Lecture begins at 11am in the Warwick Hall, Burford. More information www.theartsocietycotswolds.org.uk
- 16 **Casino Night** in aid of Longborough Cricket Club in the Village Hall at 7.30pm. Tickets £15, to include buffet, from village shop or pub. Cash bar.
- 16/17 **Stow Gift, Craft & Collectors Fayre** St Edwards Hall, Stow 9.30am - 4.30pm Free Entry, Refreshments All Day Disabled & Dog Friendly! Please contact Issy 01608 672598 or issyreeves@btinternet.com
- 18 **Blockley Art Society** a lecture by Peter Warwick 'The Tragic Beauty of Ice' in St George's Hall at 2.30pm. Contact Elaine Parker 01386 840326.

Planning an EVENT? FUNDRAISING?

PUBLICISE IT HERE FREE OF CHARGE

FREE LINEAGE

- Art show, Aunt Sally
- Beer festival, Bell-ringing, Bird watching,
- Book reading
- Cake bake, Concert, Cooking demonstration,
- Craft sale / demonstration, Cycle ride
- Darts match, Dog show, duck race
- Egg & spoon races
- fete, fair, fireworks display, flower festival
- gym display,
- horse & pony show
- jazz event
- knitting
- local gin tasting
- motor show
- night walk
- open gardens, open air theatre
- painting exhibition
- pony rides
- quiz
- run, ride, roam
- scarecrows, singing
- skittles
- teas
- walk

MARKET DAYS

BOURTON ON THE WATER

Farmers' Market 4th Sunday: 9.30 - 1300
CHARLBURY June, September, December 9 - 1pm
 Farmers' Market Playing Close, Charlbury. OX7 3RJ
CHIPPING NORTON 3rd Saturday monthly from 8.30am
 Farmers' Market every Saturday 8.45 - 11am, Lower
 Country Market Town Hall with Farmers' Market on 3rd
 Saturday
 Weekly Market every Wednesday

GREAT ROLLRIGHT

Village Market first Saturday monthly except January

MORETON-IN-MARSH

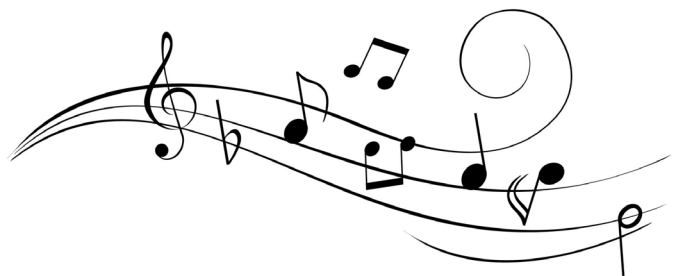
Weekly Market every Tuesday 9 - 3.30pm
 Country Market every Thursday 10am - 12noon in WI
 Hall

NORTHLEACH STOW ON THE WOLD

Farmers' Market every Wednesday 8.30-3.30pm
 2nd and last Thursday 9 - 1pm until
 Sept

STOURTON

Farmer's Market First Thursday monthly except
 January in Village Hall. CV36 5HG



MARCH/APRIL

- 9 **Gloucestershire, Warwickshire Railway** begin their railway service again. Book on line www.gwsr.com
- 15 **Cotswold School Quiz Night** 7pm for 7.30pm Teams of six £6. Licensed bar and snacks.
- 23 **North Cotswold Marmalade Festival** 10am – midday at The Hall, Cherington. £5 entry fee Guest Speaker Kyle ap Simon – Cookery Publisher and Author
- 30 **Chipping Campden Festival Choir** – 'Tremendous Te Deum' concert in St James' Church, Chipping Campden at 7.30pm. Ticket information to be advised.
- 14 Apr **Burford Singers Spring Concert:** Ein Deutches Requiem and Vaughn Williams Five Mystical Songs at 7.30pm in St John the Baptist Church, Burford. Tickets: The Madhatter Bookshop Burford or www.burfordingers.org.uk

Tickets, Booking information etc. from –

BOURTON ON THE WATER VISITOR INFORMATION CENTRE

Victoria Street, Bourton on the Water. Open Mon-Fri 9.30-5pm, Sat 9.30-5.30, Closed Sunday **01451 820211**

E: info@visitbourton.com

BURFORD INFORMATION CENTRE, High St, Burford, OX18 4LS.

Open Mon-Sat 9.30-5pm, Sun 10-4pm. **01993 823558 E:**

Burford.vic@westoxon.gov.uk

CHIPPING NORTON VISITOR INFORMATION POINT

Guildhall, Goddards Lane, Chipping Norton OX7 5NJ. Office hours Mon-Fri.

MORETON AREA CENTRE High Street, Moreton. Mon 8.45am-

4.00pm, Tues-Thurs 8.45am-5.15pm, Fri 8.45am-4.45pm, Sat 10am-1pm (BST), 10.00am-12.30pm (BWT), Sun CLOSED. **01608**

650881 E: Moreton@cotswold.gov.uk

STOW VISITOR INFORMATION St.Edwards Hall, The Square, Stow.

Library (open library hours) + Information Point in the lobby (open every day).